



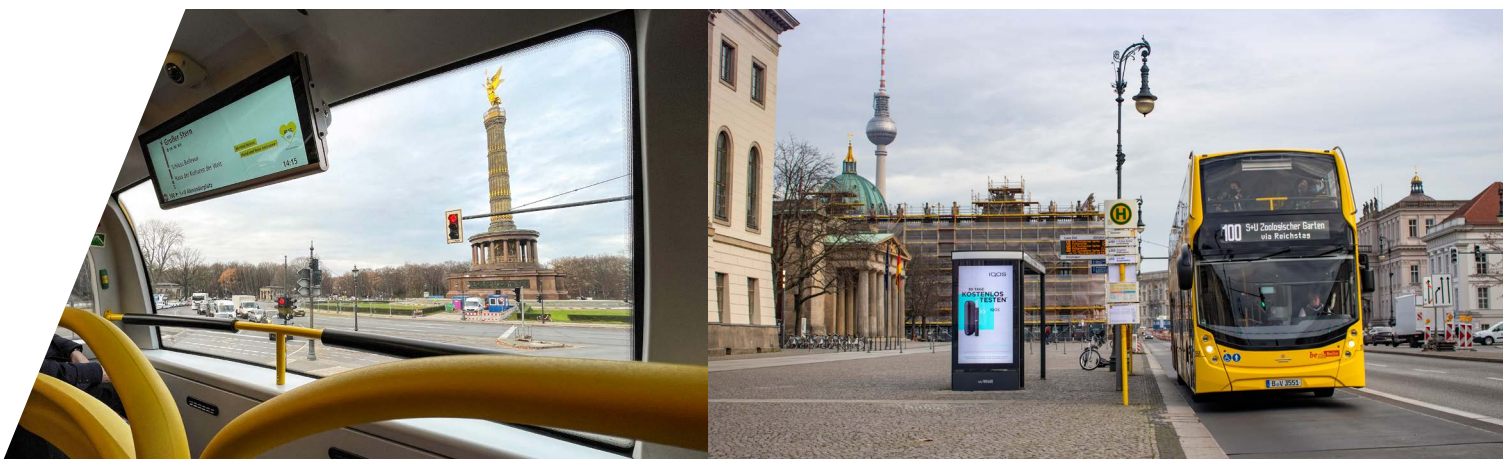
ALEXANDER
DENNIS

Enviro500

DOUBLE DECK BUS

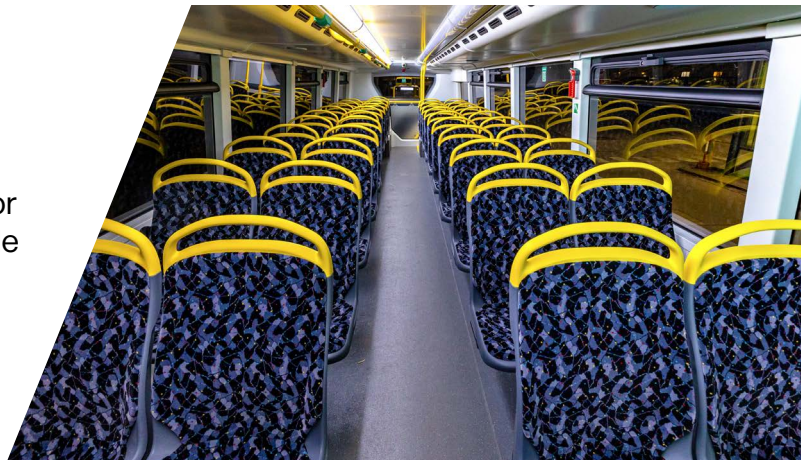
The Alexander Dennis Enviro500 provides efficient, comfortable, high-capacity transport on a compact road footprint. Alexander Dennis has used its global expertise as the world's leading manufacturer of double deck buses, with over 18,000 in service around the world, to adapt the best-selling Enviro500 to the requirements of bus services in Berlin.

Berliner Verkehrsbetriebe's fleet of 200 Alexander Dennis Enviro500 is now a familiar sight on the boulevards of the German capital.



Features and benefits

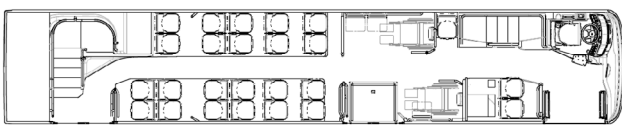
- Whole-vehicle AD24 aftermarket support
- 80 fixed seats
- 112 passengers total capacity
- Three doors + staircases at front and rear for easy passenger flows throughout the vehicle
- Fully air-conditioned
- LED interior lighting adjusts colour tone to changes in exterior temperature to assist thermal comfort



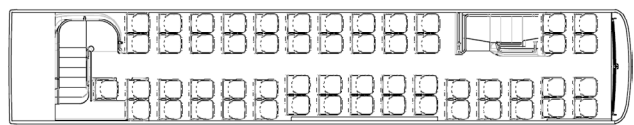
Technical specifications

Dimensions	13.8m length / 2.55m width / 4.06m height
Overhangs and wheelbases	3.0m front and 3.37m rear overhang / 5.93m and 1.5m wheelbases
Manoeuvrability	23.1m swept turning circle
Weights	26,000kg GVW / 16,400kg UW
Passenger capacity	80 fixed seats (25 lower deck, 55 upper deck) and 3 tip-ups / 32 standees / 112 total capacity
Headroom	1.94m lower deck / 1.69m upper deck
Seats	Kiel Ideo 30
Accessibility	2 wheelchair spaces accessed via manual ramp at centre door
Climate system	Thermo King TDD-S air-conditioning and Spheros auxiliary heating
Engine	Mercedes-Benz OM936 (6 cylinder, 7.7 litre, 260kW (354PS), Euro VI)
Transmission	Voith DIWA.6
Axles	ZF RL75A front axle / ZF AV133 drive axle / ZF RL75A tag axle, actively steered
Tyres	305/70R22.5

Seating layout



Lower deck with 25 fixed seats, 3 tip-up seats + 2 wheelchair spaces



Upper deck with 55 seats